

# The Lisbon Pilot



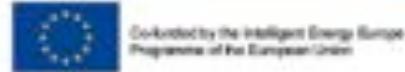
Joana Ribeiro

Occam

eBRIDGE Milan workshop – Urban eMobility 2020

13 November 2015, Spazio Ex-Ansaldo - Milan

[ebridge-project.eu](http://ebridge-project.eu) Follow us    



## 01. THE MUNICIPALITY OF LISBON

- Lisbon is the capital of Portugal
- 547.733 inhabitants within its administrative limits
- 3 million people in the Metropolitan Area
- ~10.000 employees



**02. THE HISTORY OF LISBON'S FLEET**



**1910-1946**



**1946-1955**



**1956-1974**



**1974-1986**



**1986-2005**



### 03. WHAT HAS BEEN LISBON'S STRATEGY



The municipality has defined long ago an Energy and Environmental Strategy

Has always been predisposed to use of different fuels and propulsion systems

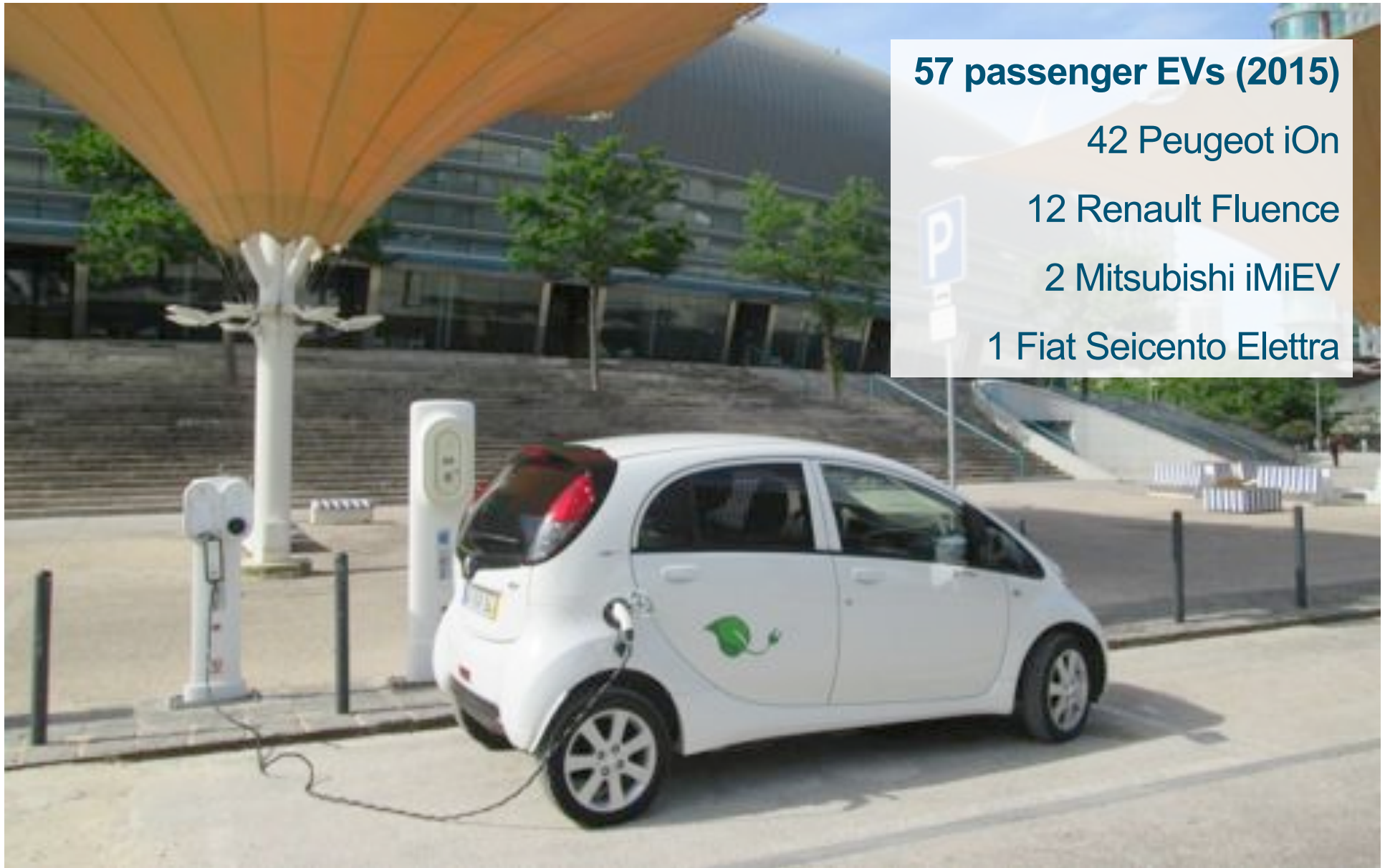
Committed to electromobility in the last 7 years

Reduced Emission Zone in some areas of the city since 2010

## 04. FLEET MANAGEMENT IN LISBON



## 05. LISBON PILOT



**57 passenger EVs (2015)**

42 Peugeot iOn

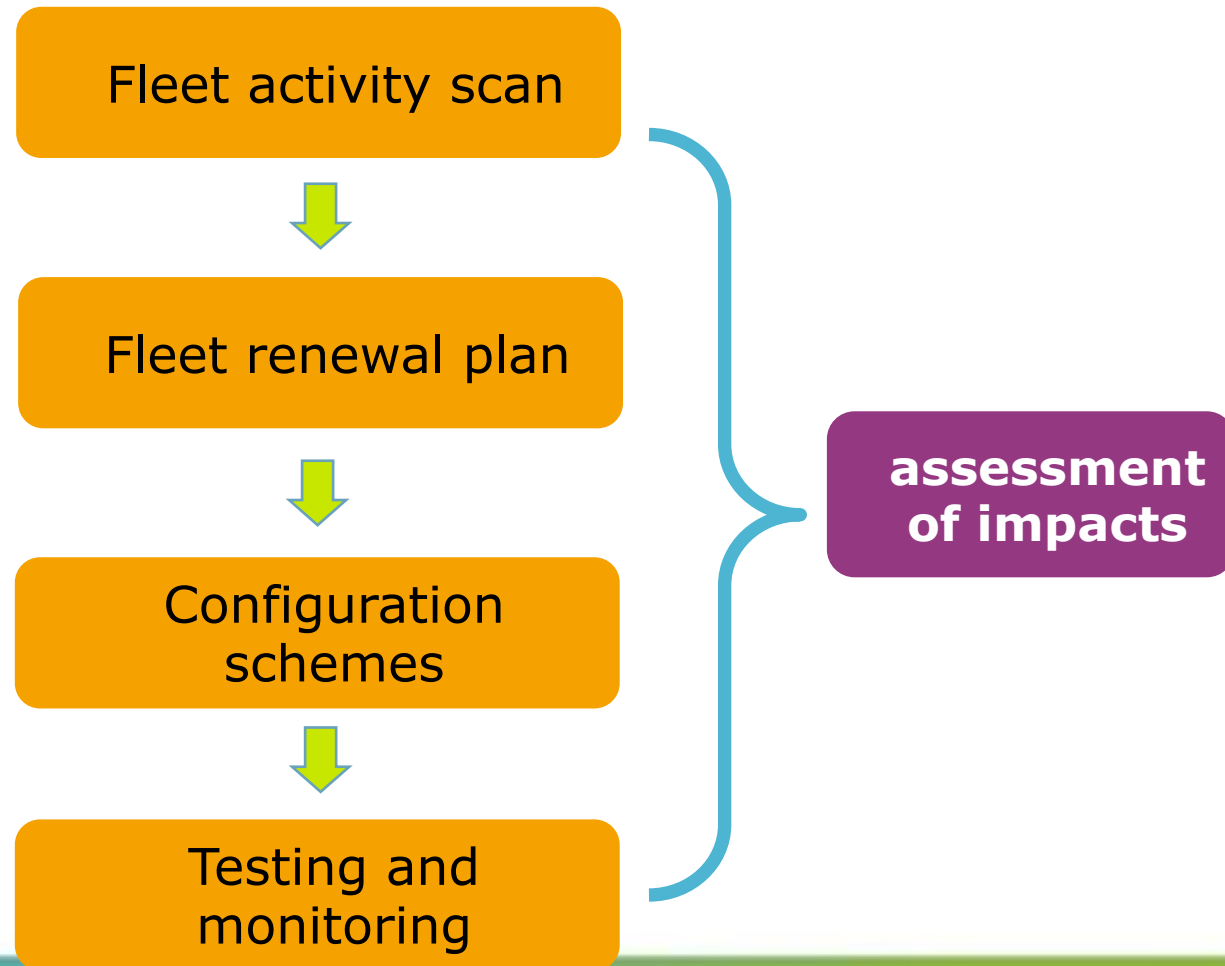
12 Renault Fluence

2 Mitsubishi iMiEV

1 Fiat Seicento Elettra

## 05. LISBON PILOT

# Assessment of the usage potential of EVs in municipal fleets



## 05. LISBON PILOT: KEY FINDINGS

**A “leading by example”  
approach: important for  
other companies and  
citizens**

**Limited battery range: installation  
of fast-charging points and other  
technologies (hybrid plug-in)**





## 05. LISBON PILOT: KEY FINDINGS

**Information events are effective means of clarifying specific user concerns and gathering suggestions**

**Drivers behaviour: routes more rationalized and driving behaviour less aggressive**



## 06. CONCLUSIONS

**EVs in full operation since 2013: no major problems detected, but adjustments were necessary to maintain the service levels**

**There is not a “general recipe”; each entity has its specificity and needs to adapt to the new reality**



# Thank You for your attention.



## MILANO SHARING CITY LA CITTÀ IN CONDIVISIONE

13 - 14 Novembre 2015 | Base Milano Spazio Ex-Ansaldo | Via Bergognone 34

 Co-funded by the Intelligent Energy Europe Programme of the European Union  
The sole responsibility for the content of this publication lies with the authors. It does not necessarily reflect the opinion of the European Union. Neither the ICFRE nor the European Commission are responsible for any use that may be made of the information contained therein.

[ebridge-project.eu](http://ebridge-project.eu)

